

NOTES

- ALL SEWERAGE RETICULATION WORKS SHALL BE CONSTRUCTED IN ACCORDANCE WITH THE WATER CORPORATION'S SEWERAGE MANUAL VOLUME 1 (AS AMENDED), THE SPECIFICATION AND THE CURRENT WATER CORPORATION STANDARD DRAWINGS
- CONSTRUCTION OF SEWERS IN LOTS WITH FILL SHALL NOT PROCEED UNTIL FILL IS PLACED AND COMPACTED IN ACCORDANCE WITH THE SPECIFICATION
- THE CONTRACTOR SHALL DETERMINE AND BE RESPONSIBLE FOR THE BEDDING CONDITIONS TO COMPLY WITH THE REQUIREMENTS OF THE WATER CORPORATION'S SEWER MANUAL VOLUME 1 (AS AMENDED)
- DX = DUPLEX (REQUIRES TWO BOUNDARY CONNECTIONS)
GH = GROUP HOUSING (REQUIRES Ø150 CONNECTION)
- CENTRES OF ALL ACCESS CHAMBERS TO BE 3.5m FROM FRONT BOUNDARIES AND 10m FROM SIDE AND REAR BOUNDARIES OF LOT UNLESS OTHERWISE DIMENSIONED
- FOR STAGING OF WORKS CONTRACTOR TO PROVIDE SEALED INLET ON UPSTREAM INLET OF ACCESS CHAMBER ADJACENT TO RETICULATION BOUNDARY (UON)
- EXISTING SEWER INFORMATION FROM WATER CORPORATION AS CONSTRUCTED PLANS
- EXISTING SERVICES - INFORMATION ON THESE DRAWINGS PURPORTING TO RELATE TO EXISTING SERVICES IS INDICATIVE ONLY AND MAY NOT BE COMPLETE REFER TO SPECIFICATION AND CLAUSE 12 OF AS4000
- THE CONTRACTOR SHALL NOTE THAT NON-TRAFFICABLE SUBTERANEAN STRUCTURES AND/OR VOIDS (SOAKWELLS, ETC.) MAY EXIST ON THE SITE AND SHALL TAKE ADEQUATE MEASURES TO LOCATE THESE PRIOR TO COMMENCING WORKS AND SHALL ADOPT SAFE WORK PRACTICES THAT OBTAIN ANY RISK THAT SUCH STRUCTURES MAY PRESENT.
- THE SUPERINTENDENT HAS NOT INVESTIGATED THE SITE & MAKES NO REPRESENTATION AS TO WHAT MAY EXIST ON OR BELOW THE SITE. THE CONTRACTOR SHALL MAKE THEIR OWN INVESTIGATIONS AS TO THE NATURE OF THE SUBSURFACE CONDITIONS OF THE SITE. A GEOTECHNICAL REPORT IS PROVIDED AS A GUIDE ONLY.

LEGEND

- DESIGN (FINISHED) CONTOUR
- EXISTING SEWER AND ACCESS CHAMBER/MAINTENANCE SHAFT
- FUTURE SEWER AND ACCESS CHAMBER/MAINTENANCE SHAFT
- PROPOSED SEWER AND ACCESS CHAMBER/MAINTENANCE SHAFT
- PROPOSED SEWER AND DELETED ACCESS CHAMBER
- PROPOSED SEWER WITH CONCRETE ENCASUREMENT
- RETICULATION AREA BOUNDARY
- CATCHMENT BOUNDARY

COVER TYPE (CIRCLE = GATED) (SQUARE = CONC)
 ACCESS CHAMBER NUMBER
 APPROXIMATE DEPTH OF CHAMBER
 DROP
 CHAMBER TYPE 90° ANGLE OF MAINTENANCE SHAFT

0.00 FLOW IN L/sec
 0.00 (F) FUTURE FLOW IN L/sec

NET AREA (Ha)
 POP. DENSITY (PERSONS/NET Ha)
 FLOW (LITRES/PERSON/DAY)
 PEAK FLOW (L/sec)

0.00-70/180-0.00

DESIGN CRITERIA - AREA

NET AREA TO BE SERVED 2.43Ha
 TOTAL PEAK FLOW 0.53L/s
 WATER TABLE DRY

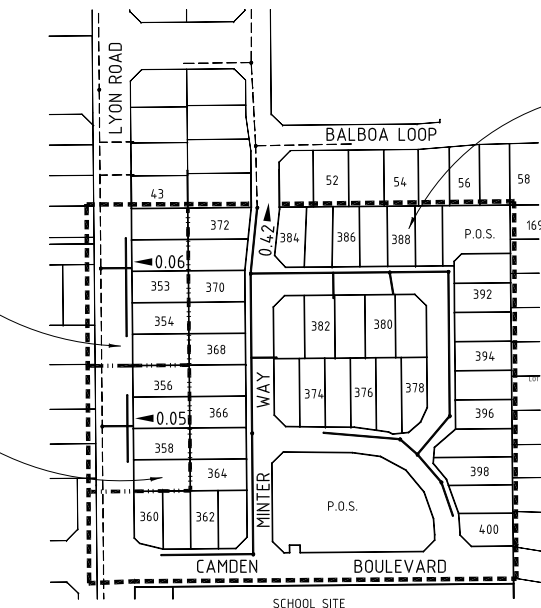
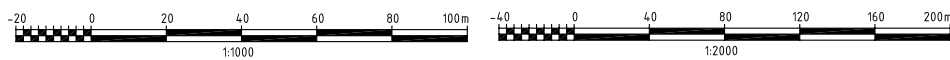
NUMBER OF LOTS SERVED: 49

LENGTH OF SEWERS:

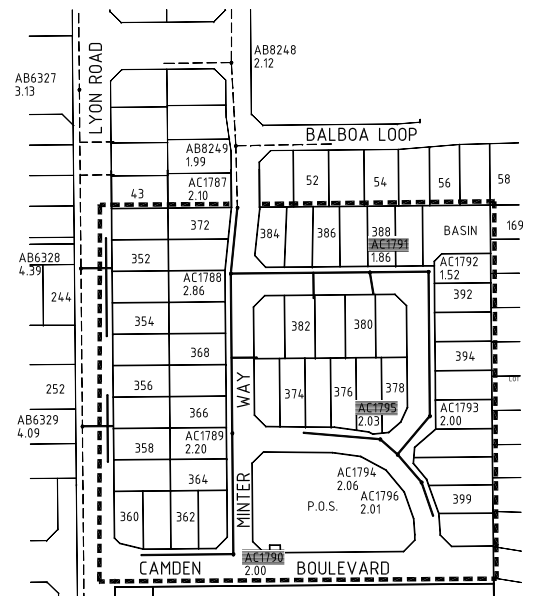
Ø150 691.4m
 Ø225 0.00m

NUMBER OF ACCESS CHAMBERS: 0

NUMBER OF MAINTENANCE SHAFTS: 10

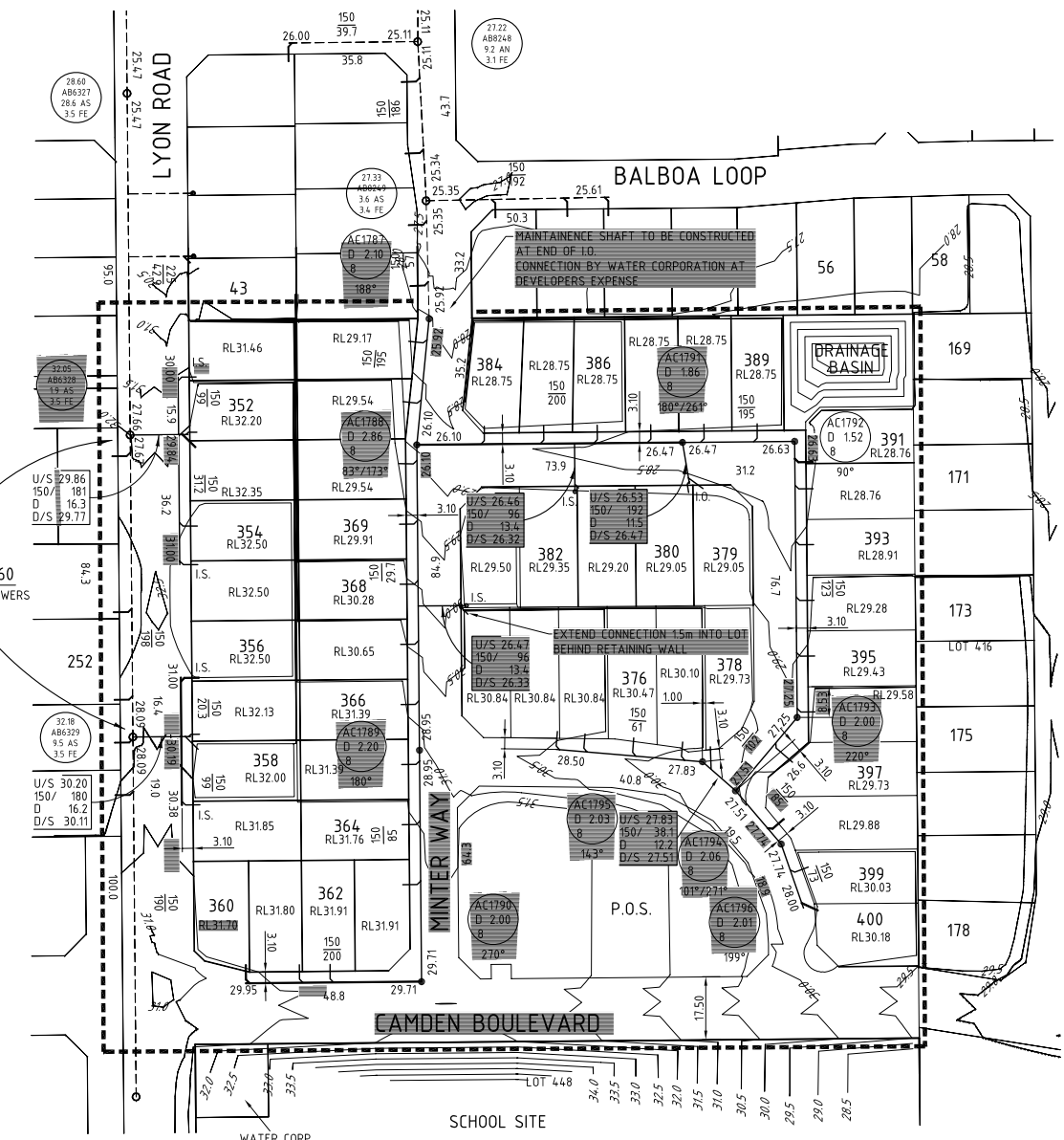


SEWER DESIGN DATA PLAN
1:2000



SEWER SITE PLAN
1:2000

CONNECTION LOTS 351 TO 360
 INTERNAL DROP CONNECTION OF I.O. SEWERS
 BY WATER CORPORATION AT DEVELOPERS EXPENSE



SEWER RETICULATION PLAN
1:1000

EXISTING SERVICES - INFORMATION ON THESE DRAWINGS PURPORTING TO RELATE TO EXISTING SERVICES IS INDICATIVE ONLY AND MAY NOT BE COMPLETE REFER TO SPECIFICATION AND CLAUSE 12 OF AS4000

LOCAL AUTHORITY CITY OF COCKBURN
 THIS PLAN IS ACCEPTED AS COMPLYING WITH OVERALL SEWERAGE PLANNING. COMPLIANCE WITH WATER CORPORATION SEWERAGE MANUAL HAS NOT BEEN CHECKED AND REMAINS THE RESPONSIBILITY OF THE CONSULTING ENGINEER.
 FOR MANAGER DEVELOPMENT SERVICES BRANCH

IS92-201-1B

W.A.P.C. No 126771 FILE No. JT1 2006 13782 V01 RETICULATION AREA THOMSONS LAKE 3

REV	REVISION	DATE	APPROVED
1	PRECAL & SEWER AMENDED FRONTING LOTS 398-400	09/03/07	P.J.G.
0	PRECAL, SEWER ROAD TWO, LYON RD & ANGLES AMENDED, WATER CORP NOTES ADDED	17/01/07	L.M.
A	ISSUED FOR APPROVAL	25/10/06	P.J.G.

CLIENT
MILUC INVESTMENTS PTY LTD

THE CIVIL GROUP
 CONSULTING CIVIL ENGINEERS
 38 Richardson Street West Perth WA 6005
 Telephone: (08) 9481 4255
 Facsimile: (08) 9481 3900
 Copyright The Civil Group WA Pty Ltd

DRAWN	C. Densmore
DESIGNED	L. Fisher
CHECKED	B. Griffiths
APPROVED	L. Murtagh
DATE	17/01/07

TITLE
**LOT 446 LYON ROAD
 AUBIN GROVE
 SEWER SITE, DESIGN DATA & RETICULATION PLAN**

ORIGINAL SHEET SIZE	SCALE 1:1000 1:2000
A1 DO NOT SCALE	LEVEL DATUM : AHD
	SHEET 1 OF 1
DRAWING No	REV
7359-02	1