

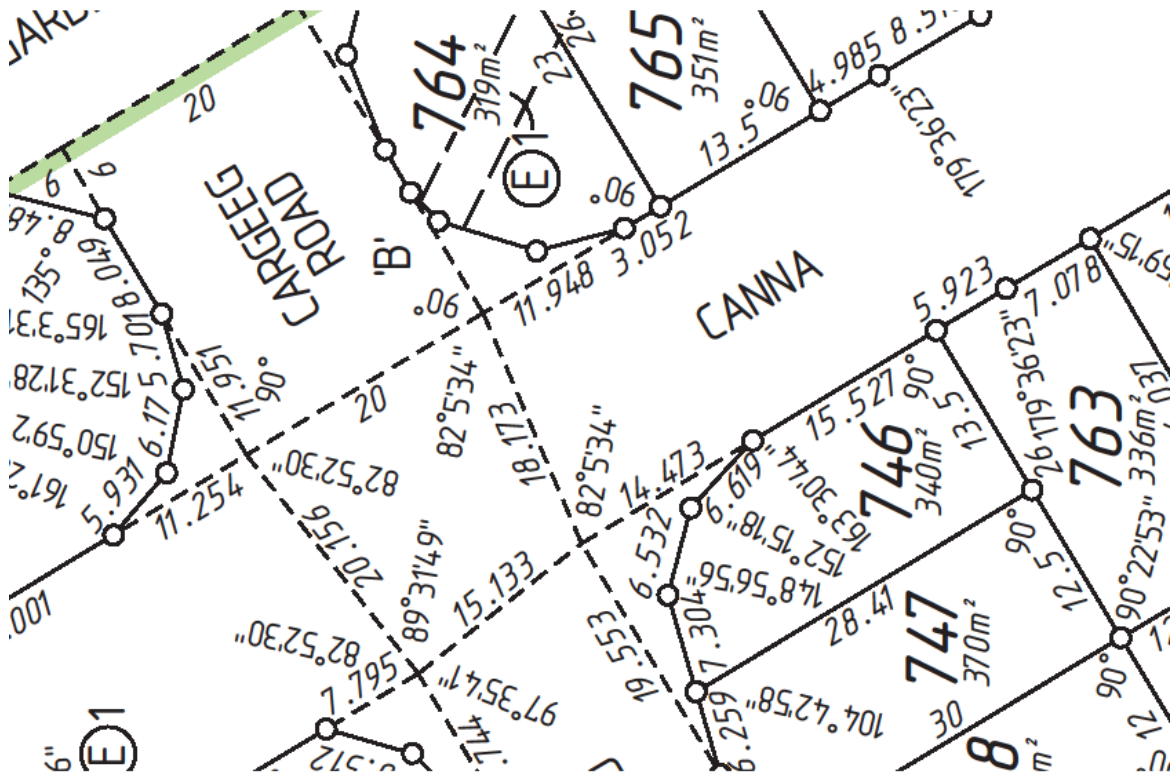
Chelsea Village

Located on the corner of Garden Street and Nicholson Road roundabout, Canning Vale

TITLES AVAILABLE - Plan No: 57697

Lot	Street	SQM	Frontage	Depth	Price
746	Cargeeg Road	340	13.5m Cnr	28.4m	\$245,000

R = Reserve (Buyer has registered interest)



Double Garage Required • No Zincalume Roof Permitted
Minimum House Size 120 square metres (Excluding Alfresco)



Samantha Cole

a: 129 Eucalyptus Blvd, Canning Vale, WA, 6155

p: 08 9256 1878

e: sales@landforsalewa.com.au

0412 579 522

www.landforsalewa.com.au

DISCLAIMER: Prices, availability and incentives subject to change without notice. Whilst every care has been taken with the preparation of these particulars, which are believed to be correct, they are in no way warranted by the Selling Agent or the Seller in whole or in part and should not be construed as forming part of any contract.. Any intending buyers are advised to make enquiries, as they deem necessary, to satisfy themselves on all matters in this respect. *Conditions Apply 4.11.11