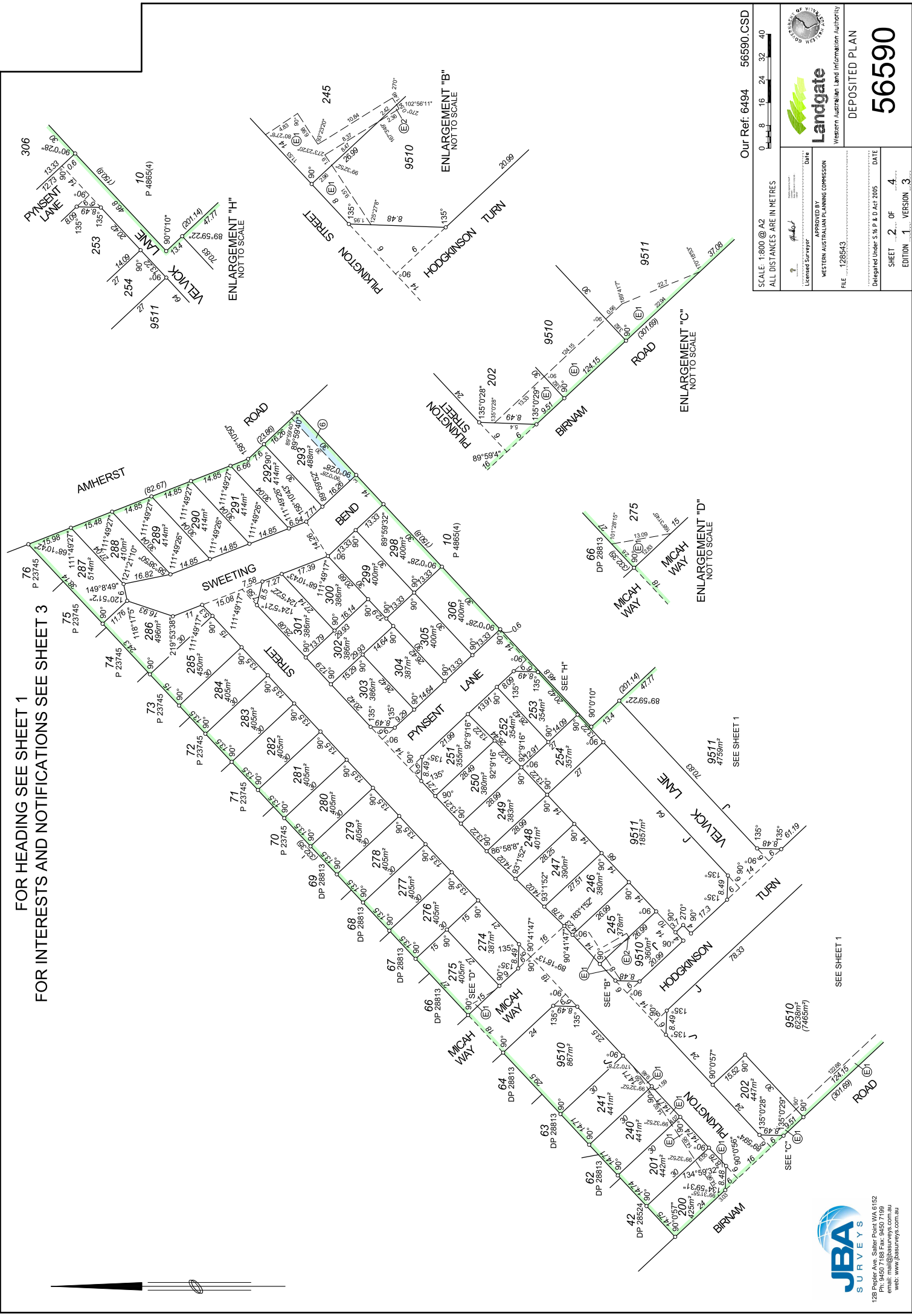


FOR HEADING SEE SHEET 1
FOR INTERESTS AND NOTIFICATIONS SEE SHEET 3



Our Ref: 6494 56690.CSD

SCALE: 1:800 @ A2
ALL DISTANCES ARE IN METRES

APPROVED BY Licensed Surveyor		DATE	
WESTERN AUSTRALIAN PLANNING COMMISSION		DATE	
FILE: 128543		DELEGATED UNDER S 5 & 6 OF THE ACT 2015	
SHEET 2 OF 4		EDITION 1 VERSION 3	

SEE SHEET 1

12B Poplar Ave, Sailer Point WA 6152
Ph: 9450 7188 Fax: 9450 7199
email: mail@jbasurveys.com.au
web: www.jbasurveys.com.au

DEPOSITED PLAN
56590