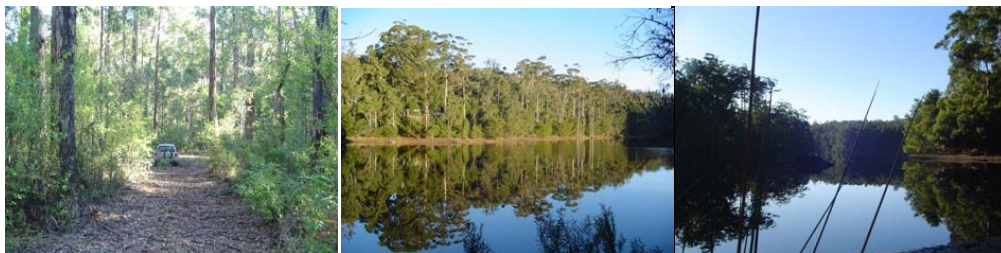
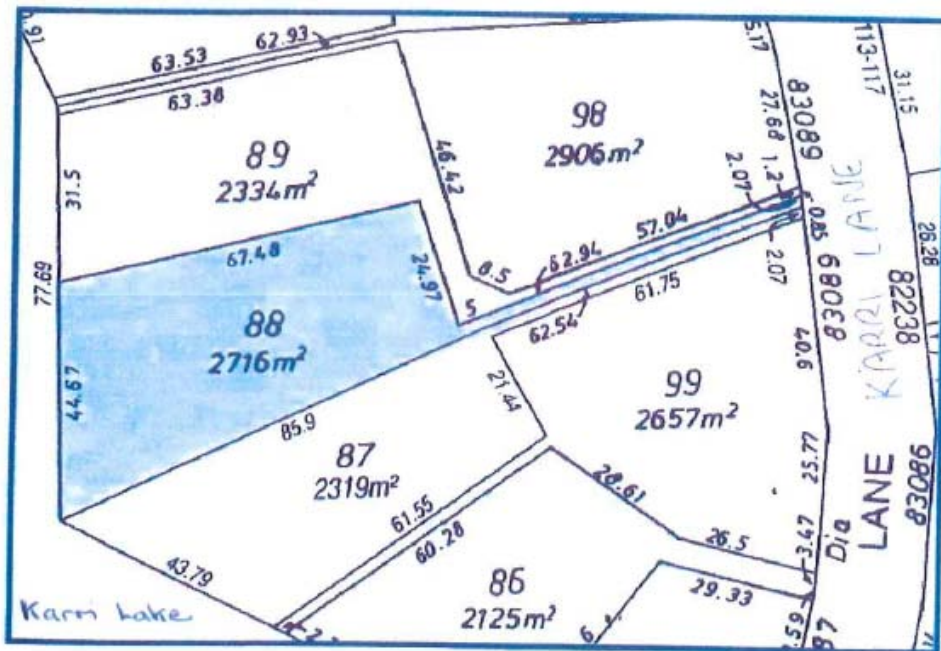


# QUINNINUP – On Karri Lake

Located on Karri Lane just out of the township of Quinninup. 30km's south of Manjimup

**TITLES AVAILABLE** - Plan No: 83087

Lot #	Street	SQM	Frontage	Price
88	Karri Lane	2,716	44.67 m	\$123,950



**R = Reserve** - Buyer has expressed serious interest

**DAN BODIS**

**0488 553 537**

a: 129 Eucalyptus Blvd, Canning Vale, WA, 6155

p: 08 9256 1878

e: [sales@landforsalewa.com.au](mailto:sales@landforsalewa.com.au)

**Land  
4  
sale**

LAND IS OUR BUSINESS

[www.landforsalewa.com.au](http://www.landforsalewa.com.au)

DISCLAIMER: availability Prices, availability and incentives subject to change without notice. Whilst every care has been taken with the preparation of these particulars, which are believed to be correct, they are in no way warranted by the Selling Agent or the Seller in whole or in part and should not be constructed as forming part of any contract.. Any intending buyers are advised to make enquiries, as they deem necessary, to satisfy themselves on all matters in this respect.

17.06.11