

Siesta at Seville

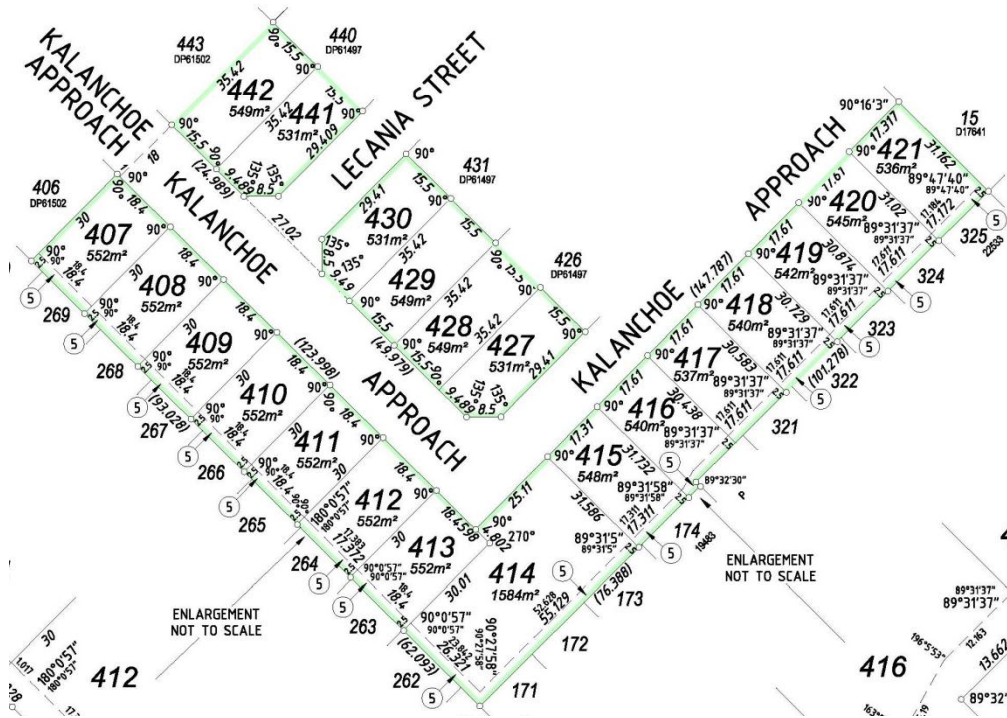
Located on Westfield Road, near Starlight Pass. Entrance via Kalanchoe Approach

STAGE 3 **TITLES AVAILABLE** - Plan No: 61496

ZONED R17.5

Lot	Street	SQM	Frontage	Depth	Price
415* R	Kalanchoe Approach	548	17.3m	31.5m	\$195,000

R = Reserve (Buyer has registered interest) *Easement on Block



Colorbond Fencing & \$1,500 Landscaping Rebate Included*

Samantha Cole

0412 579 522

a: 129 Eucalyptus Blvd, Canning Vale, WA, 6155

p: 08 9256 1878

e: sales@landforsalewa.com.au



www.landforsalewa.com.au

DISCLAIMER: Prices, availability and incentives subject to change without notice. Whilst every care has been taken with the preparation of these particulars, which are believed to be correct, they are in no way warranted by the Selling Agent or the Seller in whole or in part and should not be constructed as forming part of any contract. Any intending buyers are advised to make enquiries, as they deem necessary, to satisfy themselves on all matters in this respect. *Conditions Apply 24.04.12